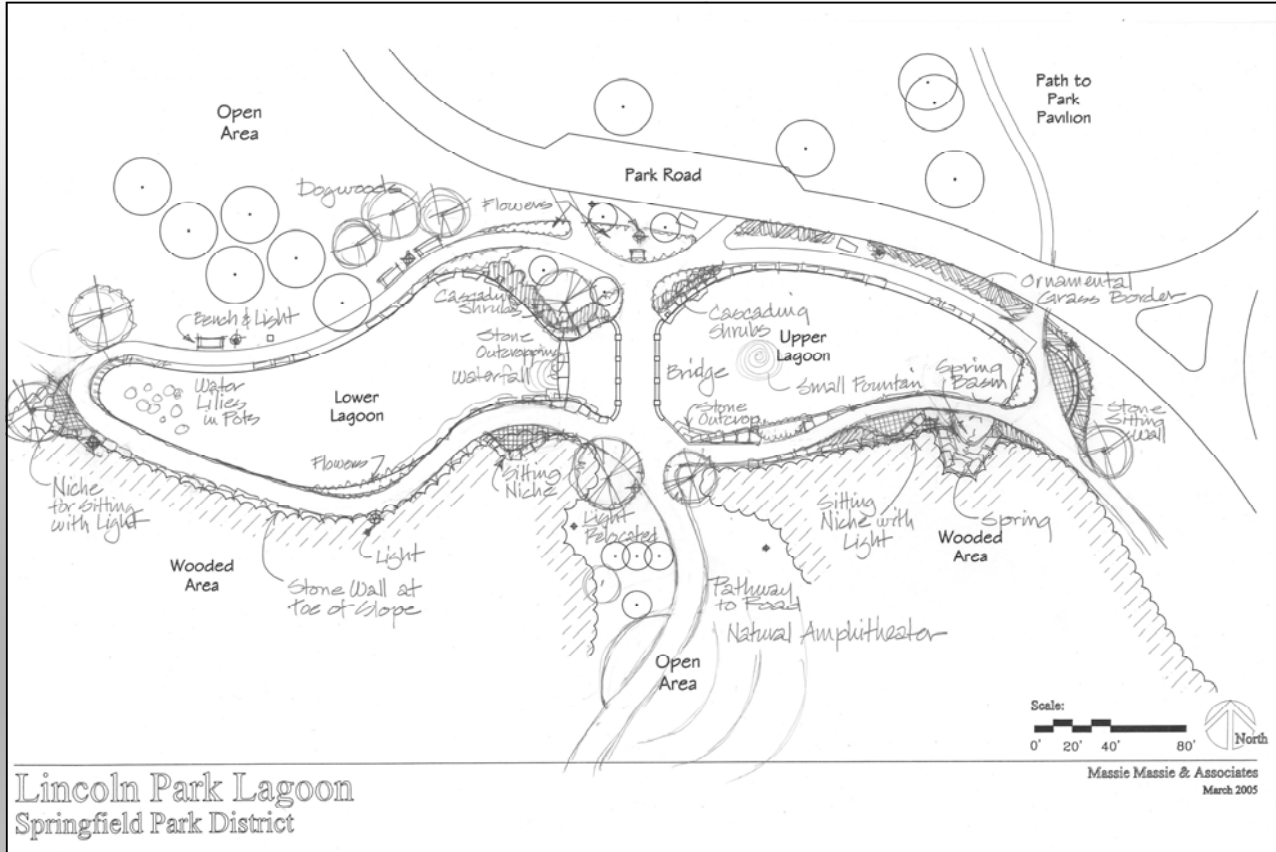


# Proposed Renovation Plan



This design will incorporate beautiful period details, such as benches, light posts and a paved walkway with natural features such as stone outcroppings, sitting walls and an amphitheater built into the hillside. The bridge will receive a face-lift and any structural problems will be addressed. The lagoon will be dredged and lined, the waterfalls restored.

Please join in this exciting renovation by purchasing a memorial brick. This new vision will not only honor the history of the bridge and lagoon, but enhance it for the enjoyment of future generations of park-goers.

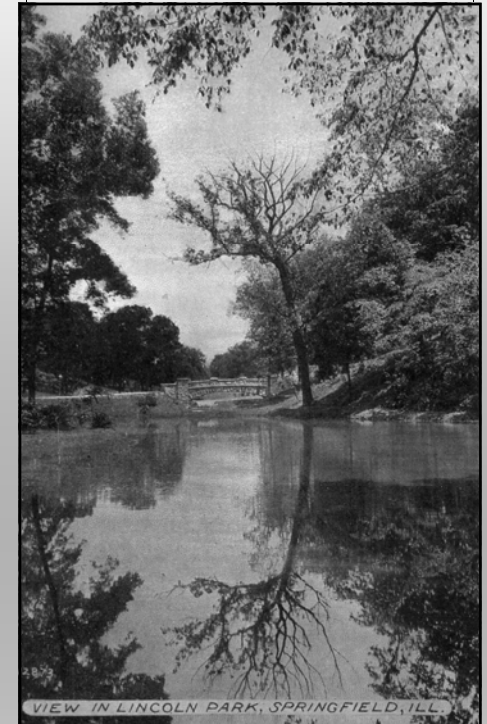
For sponsorship information and fundraising updates, please call the Springfield Parks Foundation at 544-1751 or go to [www.springfieldparksfoundation.org](http://www.springfieldparksfoundation.org).



Bunn Park  
2500 S. 11th Street  
Springfield, IL 62702  
217-525-0358

[www.springfieldparksfoundation.org](http://www.springfieldparksfoundation.org)

## The Lincoln Park Bridge and Lagoon Restoration Project



*Memorial  
Brick  
Program*



## Restoring a North End Landmark

In the Spring of 2005, fundraising began for the Lincoln Park Bridge and Lagoon Restoration Project, spearheaded by the Springfield Parks Foundation. In order to complete this dynamic renovation, the Parks Foundation and the Restoration Committee are committed to raising at least \$150,000 to add to the Park District budget for the project. This money will insure that the no part of the proposed plan will be left unfinished. Memorial bricks will be placed within the new sitting niches planned by Springfield Landscape Architect Kent Massie.

Purchasing a brick will not only help to raise much needed funds, but will also provide a permanent memorial to the important role Lincoln Park has played in the lives of so many.



Cover photo and above photo courtesy of the Sangamon Valley Collection at Lincoln Library

## Lincoln Park Bridge & Lagoon Memorial Brick Order Form

\_\_\_\_ I would like to order a 4" x 8" memorial brick for \$100. Our message is: (3 Line Maximum, please print)

(14 characters/line, a space is a character) \_\_\_\_\_

(14 characters/line, a space is a character) \_\_\_\_\_

(14 characters/line, a space is a character) \_\_\_\_\_

\_\_\_\_ I would like to order an 8" x 8" memorial brick for \$250. Our message is: (6 line maximum, please print)

(14 characters/line, a space is a character) \_\_\_\_\_

(14 characters/line, a space is a character) \_\_\_\_\_

(14 characters/line, a space is a character) \_\_\_\_\_

(14 characters/line, a space is a character) \_\_\_\_\_

(14 characters/line, a space is a character) \_\_\_\_\_

(14 characters/line, a space is a character) \_\_\_\_\_

Your Name \_\_\_\_\_

Address \_\_\_\_\_

City/State/Zip \_\_\_\_\_

Phone \_\_\_\_\_

E-mail address \_\_\_\_\_

Please use a separate order form for each brick purchase.

\_\_\_\_ I am interested in purchasing a light post. (\$1,000 limited availability)

\_\_\_\_ I am interested in purchasing a tree. (\$250)

\_\_\_\_ I am interested in becoming a Sponsor.

A Parks Foundation representative will contact you to discuss item availability or sponsorship levels. Donations are tax deductible. Checks should be made payable to Springfield Parks Foundation and must accompany your order form.

Please enclose your payment with your order form and mail to:

Lincoln Park Bricks, Springfield Parks Foundation, 2500 South 11th Street, Springfield, IL 62703.